

Capturing moving images

To capture a moving clip, it is easiest to use an external source – a VCR or a DVD player. The following instructions are for capturing into *Windows Movie Maker*, on a PC. (This is convenient, because it allows you to capture in the usefully-compressed WMV format, and it is handy if you need to edit the clips you have captured.)

Connecting your DVD player or VCR to the computer via an external 'video capture card'

This is a device that allows your VCR or DVD player to 'talk' to the computer. There are a large number available. One that seems to work is the A typical one is the KWORLD 'DVD-maker'.

- 1 Connect the device to your computer and to the VCR or DVD player, using the leads that that come with it. It should also come with instructions on how to do this.

Connect the device to your computer, using the USB lead provided.


- 2 Install the software that comes with the device. It is possible that you will need to change some settings on the software, to make it work properly.
- 3 Open *MovieMaker*, and follow the 'Capture' wizard, outlined below.



Connecting your DVD player or VCR to the computer via a digital video (DV) camera

A simple way to connect your DVD player or VCR to your computer, is to connect it via a DV camera.

- 1 If there is a tape in the camera, remove it.
- 2 Connect the DVD player, or VCR, to the camera's 'AV' socket, using the camera's AV lead.

(The 'mini-jack' plug  goes into the camera; the red, white and yellow phono plugs go into the back of the DVD player or VCR. You may need a 'Scart' / phono adaptor to do this.)



On more expensive cameras, such as the Sony VX, there may not be an 'AV' mini-jack socket, but there will be red, white and yellow phono sockets instead. You will therefore need a phono-to-phono lead.

- 3 Plug the camera into the computer, using a 'DV' or 'Firewire' lead.
- 4 Switch the camera on. (The computer may now take it upon itself to tell you that it has recognised the camera, or it may not. Ignore it.)



Capturing moving clips, using *Windows Movie Maker*

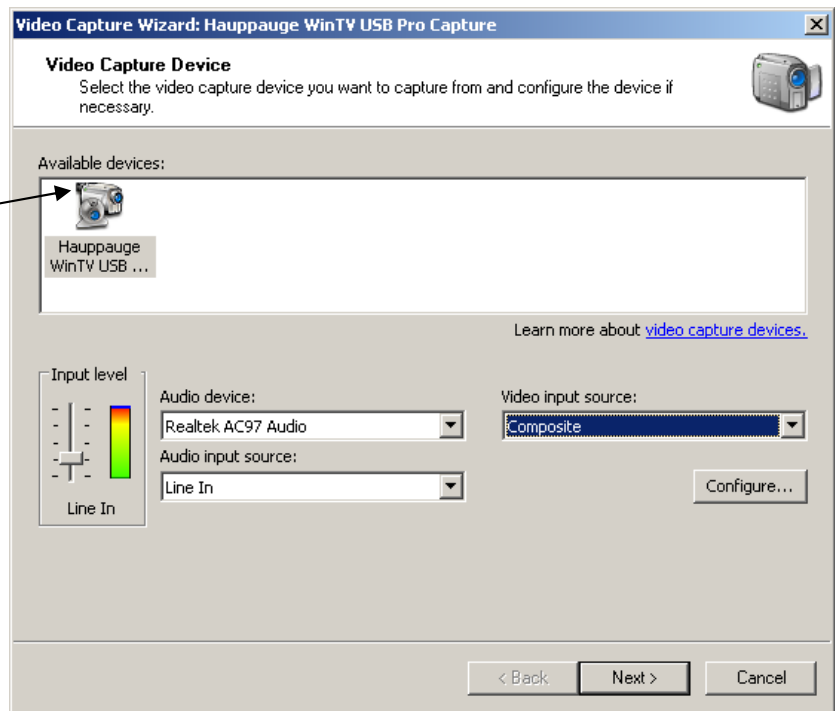
Movie Maker is the editing software 'bundled' free with *Windows XP*. (If you have *Movie Maker 1*, then you should upgrade to *Movie Maker 2*, which you can download from the internet.)

1 Open *Movie Maker*. 

2 From the 'File' menu, select 'Capture video'. The 'Video Capture Wizard' will take you through the following steps.

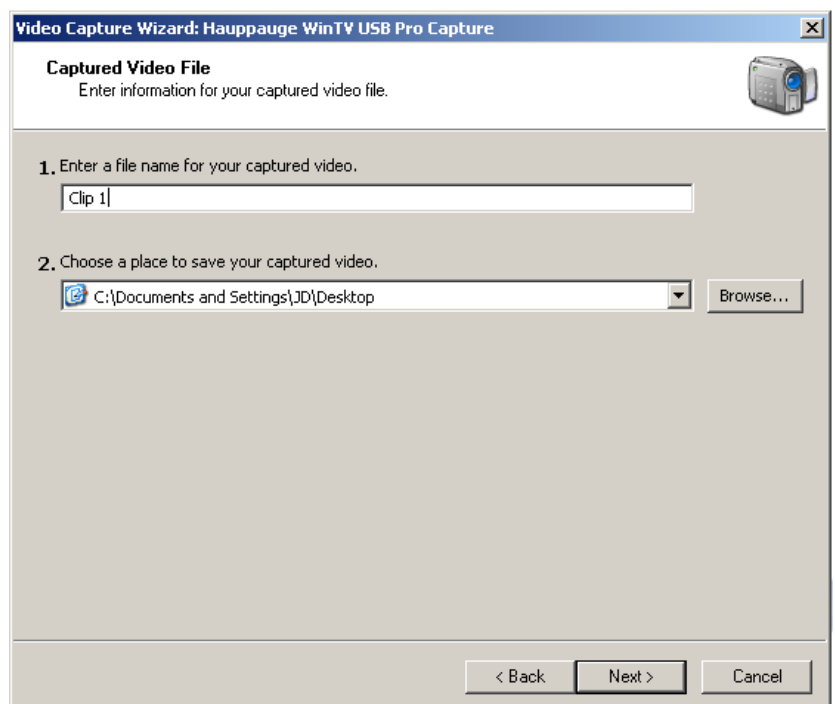
3 Select a source. There will probably be only one option.

If you are using a capture card, you may need to select the 'Composite' 'Video input source'. You may also need to select the correct 'Audio device'. (The first time you use the capture card, it is best to do some test captures, to make sure that these settings are right.)



4 Click on 'Next', and name the clip you are capturing.

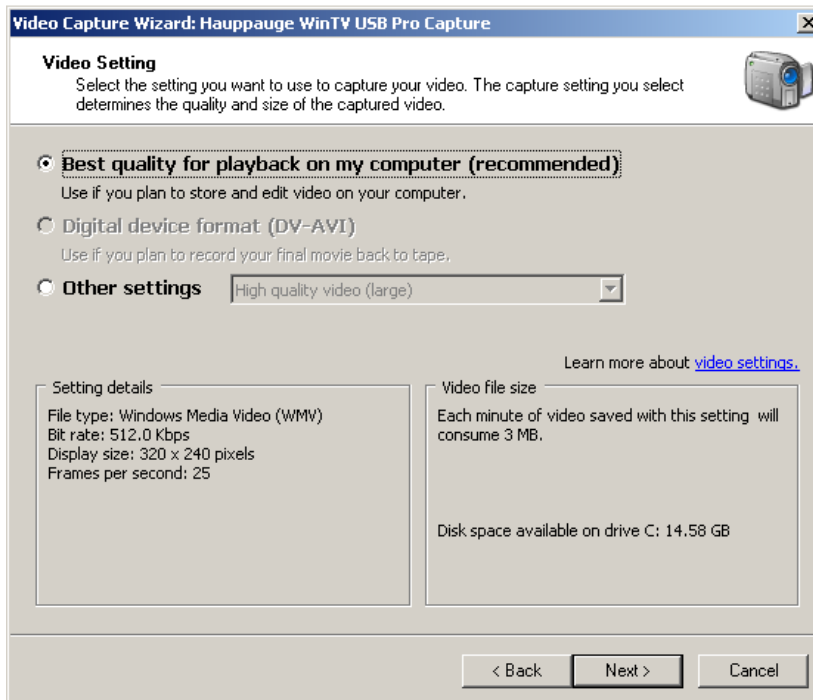
Then choose a place to save it.



- 5 Click on 'Next', and select the format for your clip.

The "recommended" 'Best quality...' option will compress the clip so that it takes up very little space, will play across the network easily, and will play very easily on *PowerPoint*. However, it will lose quite a lot of quality.

For better quality, select 'High quality video (PAL)' or 'High quality video (large)' from the 'Other settings'. This will still be very usable, but will look better. The best possible quality is 'Digital device format (DV-AVI)'.

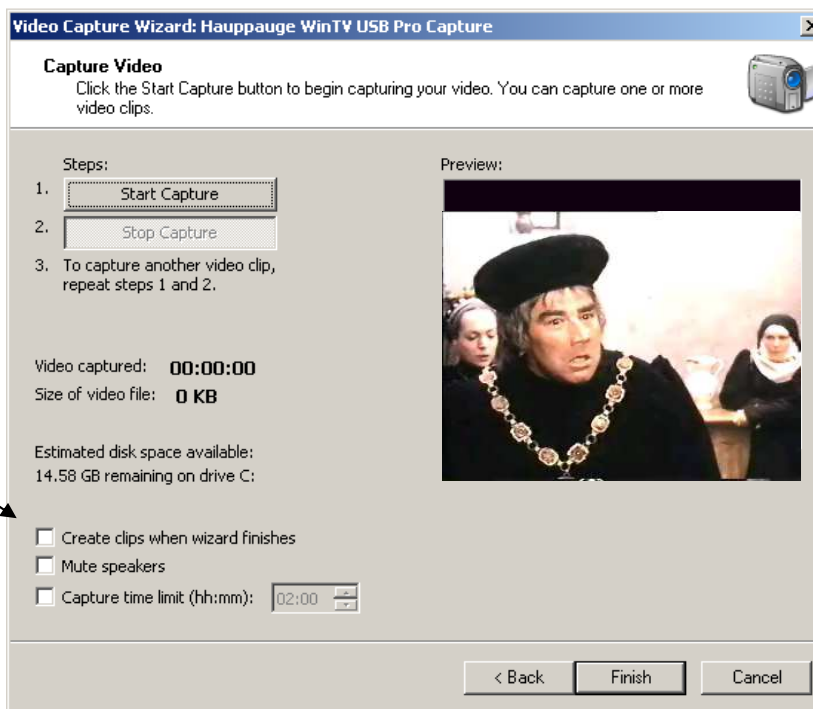


- 6 Click on 'Next'.

The video source should now be displayed in the 'Preview' window.

Make sure that the 'Create clips when wizard finishes' box is NOT ticked.

Use the 'Start Capture' and 'Stop Capture' buttons to capture your clip, then click on 'Finish'.



- 7 Your clip will now be stored, ready to use, in the folder you told it to save in.

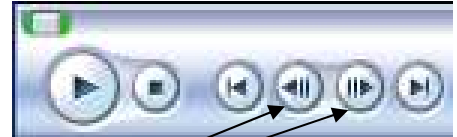
It will also be displayed in the 'Collection' window of *Movie Maker*, and you can immediately edit it in *Movie Maker* – if you want to trim it, for example.

Grabbing a still frame from a stored clip

- 1 Import the clip into *Movie Maker*; if not already in one of the 'Collections'.

To do this, open *Movie Maker*; select 'Import into collections' from the 'File' menu, and select the clip.

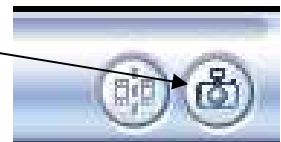
- 2 Click on the clip, in the collection. It will appear in the monitor window, where you can play, pause and scroll it very easily.



- 3 Pause the clip at the exact point where you want to capture a still frame. You can use these buttons to move backwards and forwards frame by frame.

- 4 Click on the small camera icon, at the bottom right of the monitor window.

This will open a dialogue box, asking you where you want to save the image. Select a folder to save it in, and click 'OK'.

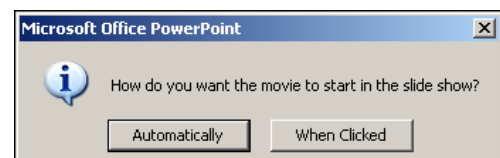


The still frame is now stored on your hard drive, and can be inserted into any document.

Inserting a clip into *PowerPoint*

- 1 In the 'Insert' menu, select 'Movies and Sounds'.
Select 'Movie from file'.
Find and select the clip that you want to insert.

- 2 A dialogue box will open, asking whether you want the clip to play automatically or not. If you click 'Automatically', then it will play immediately whenever you move to that slide. If you click 'When Clicked', then it will only play when you click on it in the slide.



- 3 You can position, re-size, copy and paste the clip, like any other object in *PowerPoint*.